

ANYWHERE

Exit Game [Alt]+[X]
 Save Game [Alt]+[S]
 Load Game [Alt]+[L]
 Pause Game [P]
 Set Game Speed 1...0
 Skip Movie Seq. [Esc]
 Return to Prev. Scr. [Esc]
 or Leave

STARTUP MENU

Start New Game
 Load Saved Game
 Quit to DOS

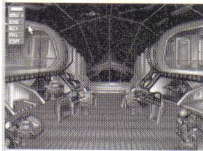
GENERAL OPTIONS

MENU

[Tab] or R-click

Bridge
 Space Map
 Colony Manager
 Vehicle Manager
 Technology Manager
 Personal Data Assistant
 Pause
 Game Options
 Exit Alien Legacy

BRIDGE



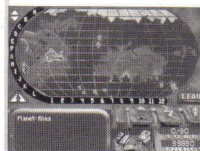
General Options Menu [Tab] or R-click
 Select Advisor [Space] or L/R Arrow Key
 Answer Comm. Panel Click Active Button
 Space Map Upper Center View Solar System
 Science/Tech Mgr. Lower Lf
 Navigation/Vcl. Mgr. Mid Lf
 Military Advisor Upper Lf
 Calypso Clny Grid Upper Rt View ship resources
 Engineering/Clny Mgr. Mid Rt
 Computer/PDA/Game Settings Lower Rt

SPACE MAP



General Options Menu [Tab] or R-click in view
 Planet Mercator Double-click planet
 Game Speed Up/Dn Slider Stop time Click STOP
 Move point of view Click arrow Max: R-click
 Zoom In Click in-arrows Max: R-click in-arrows
 Zoom Out Click out-arrows Max: R-click out-arrows
 Foreground View Click planet sidebar
 Anchor View R-click planet sidebar
 Planet Menu R-click planet
 — Colonies: View colonies on or orbiting
 — Vehicles: View ships on or orbiting
 — Follow: View follows planet's orbit
 — Anchor: View centered on planet
 — View: Planet Mercator

MERCATOR MAP



General Options Menu [Tab] or R-click vacant sector
 Select Sector Click Sector Arrows or use Arrow Keys
 Colony Options R-click Colony
With Ship
 Explore Sector Click ship
 Vehicle Menu R-click ship
 Scan for Ore Ore icon
 Scan for Energy Energy icon
 Other scanner(s) as developed

EXPLORE SECTOR



Direction Compass
 Collect item Click Hand cursor
 Fire Laser R-click Target cursor
 Cargo Limit Load: On Board/Max.
 Fuel Units left (1,000 fuel = 1 energy)
 Return to Orbit Leave
 Overhead View On/Off Large ship
 Scan Small ship
 Plasma Bomb Fireball
 Cargo View Compass icon
 Sector Map View Cargo Bay icon
 Move Ship Arrows

TECHNOLOGY MGR.



View Inventions [Space] or L/R Arrow Key
 Invent Current Click Invent
 Research Needed Upper row of numbers
 Astronomy
 Chemistry
 Electronics
 Geology
 Biology
 Mathematics
 Physics
 Research Available Lower row of numbers

VEHICLE MGR.



Filter Vehicle List By Mission, Planet, Colony
 Select Vehicle Click on vehicle listing
 See more Vehicles Click Up/Down arrows

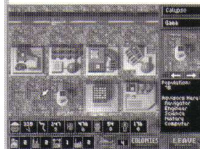


Vehicle Hangar
 Select Mission Select from Mission Menu
 # Trips To/From: Select Pipeline Mission
 Select Destination Select from Dest. Menu
 Select Pilot Select from Pilot Menu
 Load Item Click to increase R-click to decrease (Ore, Energy, Life Support, Humans, Robots)
 Select Different Vehicle Click Vehicle button
 Launch Ship Now Click Launch
 Cancel Mission Click Leave

COLONY MGR.



Colony Summary Click Colony Name to bring Summary to top of list (Habitat, Factories, Power, Labs, Ships, Missiles, Ore, Energy, Life Support, Humans, Robots)
 See More Colony Summaries Click Arrows or Up/Dn Arrow Keys
 Visit Site Grid Click Colony Summary
 Special Installations, Advisors stationed at colony Right side of Summary



Colony Grid Controls
 Options Menu R-click empty area
 Move Grid View Numeric Keypad Keys or drag mouse to edge
 Installation Menu R-click on building Change Prod Go Offline Dismantle
 Choose New Installation Click selector box arrows Click/R-click selector box
 Build Installation Drag from selector box, place on empty grid
 Change Colony Name Click name, edit, [Enter]
 Delete Colony Remove all, R-click
 Go to Vehicle Manager Click Vehicle icon
 Go to Colony Manager Click Colonies button

PDA



Select Entry Click entry, Up/Dn Arrows
 Open Library Entry Select, click or [Enter]
 Select Mode [Space] to cycle through Log, Library, Status, Damage
 Leave PDA [Esc] or click Power
 Select Log
 Select Library
 View Status
 View Damage
 Scroll Entries Up/Dn Arrows
 Delete Log Entry Select Entry, click Delete

GAME OPTIONS



Save Current Game
 Resume Earlier Game
 Start New Game
 Turn Sound On/Off
 Turn Music On/Off
 Speed Up/Down Click/R-click Speed
 Return to previous screen Click Leave



® and ™ indicate trademarks of, or licensed to, Sierra On-Line, Inc.
 ©1994 Sierra On-Line, Inc.
 All rights reserved.